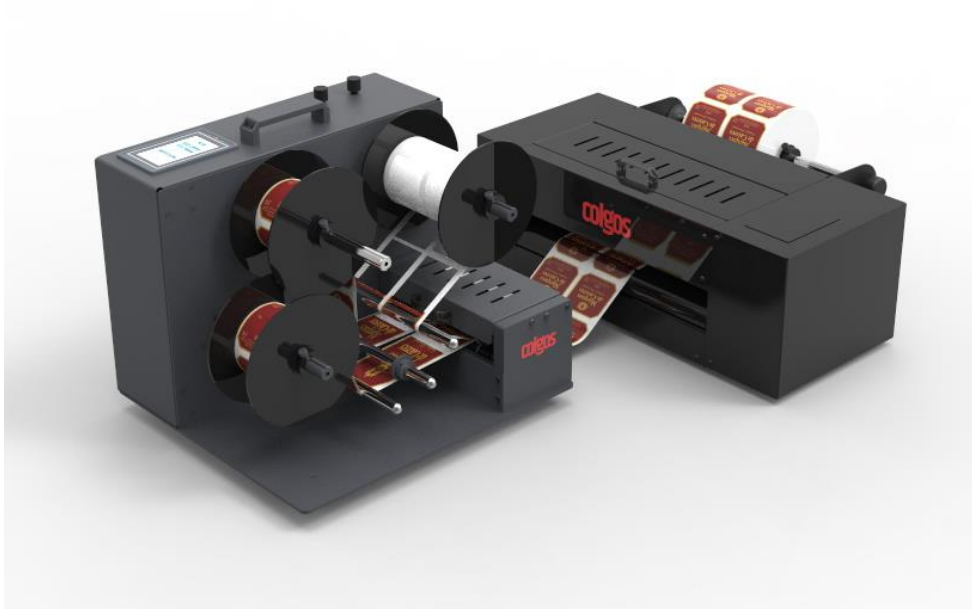


# Label Cutter-Rewinder

Colgos LabelCutter



## Label Cutter Plotter

Roll to roll label cutter plotter with rewinder

### Special Features:

- Roll to roll feed and rewinder
- High-precision guide rail on cut/plot station
- Dual press rollers on cut/plot station
- Intuitive operation on the 4.3" touch screen(rewinder)
- Variable speeds rewind with self adapting cut/plot station
- Pre-set counter
- Simple to operate and Easy to use
- State-of-the art software control
- Attention to detail design, clear overview to each machine work station
- Minimal tabletop space required
- Extensible modular design, On-demand customization function

## Technical Specifications:

<b>Model</b>	<b>CG210CR</b>
<b>Max Label Width:</b>	<b>210mm</b>
<b>Max Label Roll Diameter</b>	<b>210mm</b>
<b>Label Roll Core</b>	<b>1"/3"</b>
<b>Cut Speed</b>	<b>Up to 800mm /sec</b>
<b>Control</b>	<b>Touch Screen(rewinder station)</b>
<b>Dimension</b>	<b>W1060xD700xH430mm</b>
<b>Weight</b>	<b>About 80kgs</b>



[WWW.COLGOS.COM](http://WWW.COLGOS.COM)

TEL:+86-571-85462706

\*Picture and colors for reference only.

\*\*All technical data is approximate and subject to change.

© COLGOS Co, Ltd. 1/2019.